

# WONDERS OF SCIENCE

Teacher's Resource Book

Class  
3



## WONDERS OF SCIENCE-3

### 1. Features of Living Beings

#### Exercise

**I. Tick (✓) the correct answer : (Multiple Choice Questions)**

**Ans.** 1. (b) Plant, 2. (a) collapse, 3. (b) puppies.

**II. Fill in the blanks using the words given below :**

**Ans.** 1. eggs, babies; 2. food; 3. move; 4. stomata; 5. mushrooms.

**III. Answer the following questions :**

**Ans.** 1. Common features of all living things are as follows :

- (i) Living things can move.
  - (ii) Living things can feel and react.
  - (iii) All living things breathe.
  - (iv) All living things take in food and water.
  - (v) All living things grow.
  - (vi) Living things reproduce.
2. All living things need food to grow and work.
  3. Food for green plants is made in their leaves.
  4. Plants show movement in a number of ways. The sunflower turns to face the sun while petals of morning glory open every morning.
  5. Animals need sense organs to search for food and to protect themselves from their enemies.

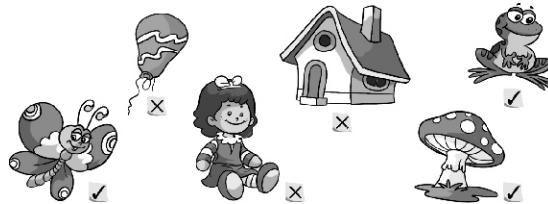
#### Activity Time

**IV. Write any three differences between the following :**

**Ans. Living things**—Breathe, Grow, Reproduce.

**Non-living things**—Do not breathe, Do not grow, Do not reproduce.

**V. Tick (✓) the living beings :**



**VI. Fill in the blanks using the words given below :**

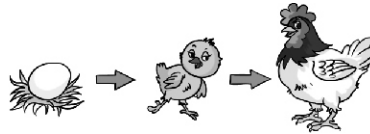
**Ans.** 1. adult, 2. cat, 3. shape, size, 4. calf.

**VII. Write in the blanks what you observe from each of the following pictures :**

**Ans.**



Living things move



A chick grows into a hen

**VIII. Write about the following animals :**



<b>Name</b>	: Cat	Hen	Fish
<b>Movement</b>	: Walks with feet	Flies with wings	Swims with fins
<b>Eats</b>	: Flesh and plants	Foodgrains	Insects and worms
<b>Produces</b>	: Young ones	Lays eggs	Lays eggs

**Let us Visit**

**IX.** Do it yourself.

## 2. Difference Between Plants and Animals

### Exercise

**I. Tick (✓) the correct answer : (Multiple Choice Questions)**

**Ans.** 1. (a) Lions and tigers; 2. (b) spores; 3. (c) leaves; 4. (b) Birds and snakes; 5. (c) both plants and animals.

**II. Fill in the blanks using the words given below :**

**Ans.** 1. babies, 2. eggs, 3. food, 4. decaying, 5. dependent.

**III. State whether the following sentences are 'True' or 'False' :**

**Ans.** 1. False, 2. False, 3. False, 4. False, 5. True.

**IV. Underline the correct words :**

**Ans.** 1. do not move, 2. plants, 3. shelter, 4. Animals, 5. give birth.

**V. Answer the following questions :**

**Ans.** 1. Green plants make their own food in their leaves from carbon dioxide and water in the presence of sunlight.

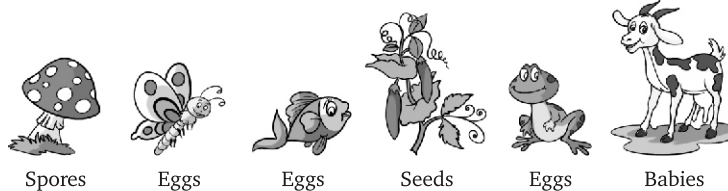
2. Sense organs help animals to find their food and also protect them from their enemies.

3. Non-green plants reproduce from spores.

4. Two differences between a plant and a human are as follows :
- Humans give birth to young ones but the plant grows from seeds.
  - Humans move from place to place but the plant cannot leave their place.
5. We should protect animals and plants because both together make this world colourful and worth-living.

### Activity Time

VI. Write, how the following plants and animals reproduce? Use the following words :



### Fun Time

VII. Do it yourself.

## 3. Parts of a Plant

### Exercise

I. Tick (✓) the correct answer : (Multiple Choice Questions)

Ans. 1. (c) root, 2. (c) root, 3. (c) flowers, 4. (b) stem.

II. Match the columns :

A (Part)	B (Function)
1. Root	(i) Breathe
2. Stem	(ii) Prepare food for the plant
3. Leaves	(iii) Absorbs water and minerals
4. Stomata	(iv) Carries food
5. Photosynthesis	(v) Sugar is made

III. State whether the following sentences are 'True' or 'False' :

Ans. 1. True, 2. False, 3. True, 4. False, 5. True.

IV. Answer the following questions :

- Ans. 1. The root holds the plant firmly to the soil, goes deep down into the earth and spreads out in search of water.
2. The functions of a leaf are to take in carbon dioxide and give out oxygen; and to make food for the plant.
3. Stomata are small openings on the underside of a leaf. They help the plant in photosynthesis by taking in carbon dioxide and releasing oxygen.



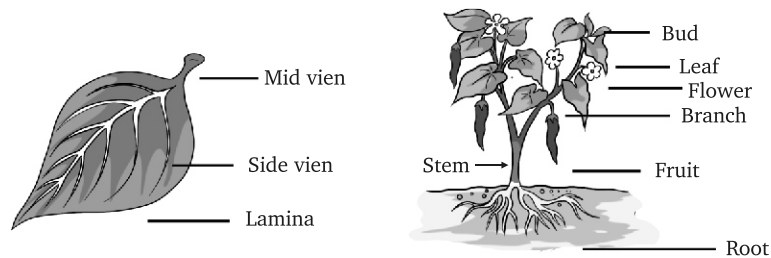
4. Photosynthesis is the process by which plants make their own food in the presence of sunlight.
5. The flat and broad part of a leaf is called lamina.

**V. Match the Plants with the parts we eat :**

A Plant	B Part
1. Coriander	(i) Fruit
2. Carrot	(ii) Seed
3. Ginger	(iii) Root
4. Apple	(iv) Stem
5. Pea	(v) Leaf

**Activity Time**

**VI. Label the following :**



**VII. Here are some leaves. Write their uses below them :**



Fan



Plate

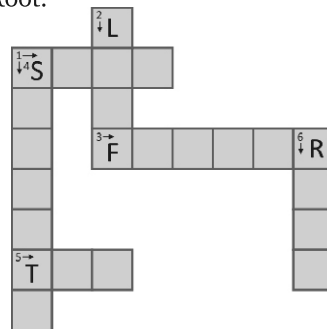


Chewing

**Quiz Time**

**VIII. Solve the crossword :**

**Across** (→) 1. Stem; 3. Flower; 5. Tap; **Down** (↓) 2. Leaf; 4. Stomata; 6. Root.



**Fun Time**

**IX.** Do it yourself.

**4. Feeding Habits of Animals**

**Exercise**

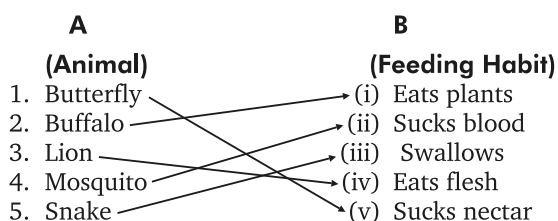
**I. Tick (✓) the correct answer : (Multiple Choice Questions)**

**Ans.** 1. (a) Cow, 2. (b) proboscis, 3. (a) horse, 4. (a) food.

**II. Fill in the blanks using the words given below :**

**Ans.** 1. carnivore, 2. herbivore, 3. food, 4. proboscis, 5. leech.

**III. Match the columns :**



**IV. Name two animals that :**

**Ans.** 1. Butterfly, Moth, 2. Squirrel, Rabbit, 3. Lion, Dog, 4. Mosquito, Leech; 5. Frog, Lizard.

**V. Answer the following questions :**

- Ans.** 1. Animals need food to grow and stay healthy.
2. Milk-producing animals must be given fresh grass, leaves, oil cakes, cotton seeds etc. to help them produce more milk.
3. A cow has sharp, thin and flat front teeth to cut and chew grass and leaves. It also has broad and flat back teeth to grind tough plant parts.
4. A cat's sharp and pointed teeth help to cut and tear its prey's flesh.
5. Omnivores have all the three kinds of teeth for cutting, tearing and grinding. Thus, they can eat both plants and flesh of animals

**Activity Time**

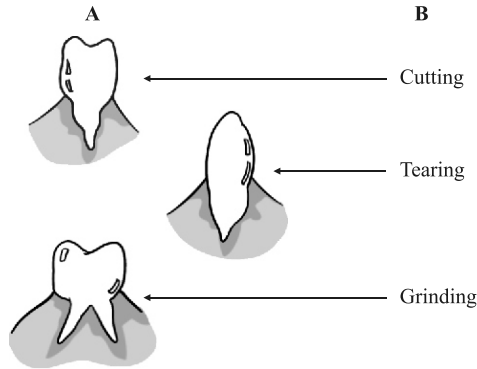
**VI. Strike the odd one out :**

**Ans.** 1. crocodile, 2. bear, 3. buffalo, 4. rhinoceros.

### Fun Time

#### VII. Match the teeth with their functions.

Ans.



#### VIII. Feed on animals!

Ans. Do it yourself.

#### IX. Let us Visit

Ans. Do it yourself.

## 5. Birds : Feathers, Beaks and Claws

### Exercise

#### I. Tick (✓) the correct answer : (Multiple Choice Questions)

Ans. 1. (a) light bodies, 2. (b) down feathers, 3. (b) vulture, 4. (b) Vulture.

#### II. Fill in the blanks using the words given below :

Ans. 1. eight thousand, 2. oil glands, 3. flight muscles, 4. hollow.

#### III. Match the columns :

- | A                                   | B                          |
|-------------------------------------|----------------------------|
| 1. A bird has a light body          | (i) movable wings.         |
| 2. Its boat-shaped body is suitable | (ii) to change direction.  |
| 3. Strong muscles are attached to   | (iii) with hollow bones.   |
| 4. The tail feathers help           | (iv) to steer through air. |

#### IV. Name two birds which :

Ans. 1. Crane, Paddy bird; 2. Crow, Sparrow; 3. Duck, Swan; 4. Pigeon, Peacock.

#### V. Answer the following questions :

- Ans. 1. A boat-shaped light body, well-formed wings and strong flight muscles help the bird to fly.
2. The perching birds sleep on a tree without falling off with the help of its toes which lock together and hold on to the branch firmly.

3. Most flesh-eating birds have strong, hooked and pointed beaks.
4. Most grain-eating birds have short, hard, pointed and horny beaks.

### Activity Time

- VI. Choose the call for the given birds from the following :**  
**Ans.** 1. Crows, 2. Hoots, 3. Clucks, 4. Whistles, 5. Chirrup, 6. Coos.
- VII. Write the type of beak or claw under each picture :**



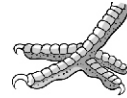
Curved beak



Broad and flat beak



Webbed feet



Climbing feet

### Fun Time

- VIII.** Do it yourself.

## 6. Birds : Nests and Care of the Young Ones

### Exercise

- I. Tick (✓) the correct answer : (Multiple Choice Questions)**

**Ans.** 1. (b) Both of these, 2. (b) Cuckoo, 3. (b) cannot fly.

- II. Fill in the blanks using the words given below :**

**Ans.** 1. lazy, 2. ground. 3. stitch.

- III. Match the columns :**

**'A'**  
(Nest)

1. Nest in the hole of a tree trunk
2. Deep cup-shaped nest
3. Nest made of leaves

**'B'**  
(Bird)

- (i) Bulbul
- (ii) Woodpecker
- (iii) Tailor bird

- IV. Answer the following questions :**

**Ans.** 1. Birds build their nest to lay eggs and protect themselves from their enemies.

2. The materials used by the birds to build their nests are feathers, grass, twigs, rags, cotton, wool, threads and leaves etc.

3. Most birds feed their young ones and look after them. They teach them to fly and find food themselves.

- V. Tell who Am I?**

**Ans.** 1. Cuckoo, 2. Tailor bird, 3. Weaver bird.

### Fun Time

- VI.** Do it yourself.

- VII.** Do it yourself.

## Let us Visit

VIII. Do it yourself.

## 7. Insects

### Exercise

**I. Tick (✓) the correct answer : (Multiple Choice Questions)**

**Ans.** 1. (b) largest animal group, 2. (c) more than a million, 3. (a) walk, 4. (a) wood, 5. (b) harmful insects.

**II. Fill in the blanks using the words given below :**

**Ans.** 1. thorax, 2. three, 3. chitin, 4. Pests, 5. colonies.

**III. Name :**

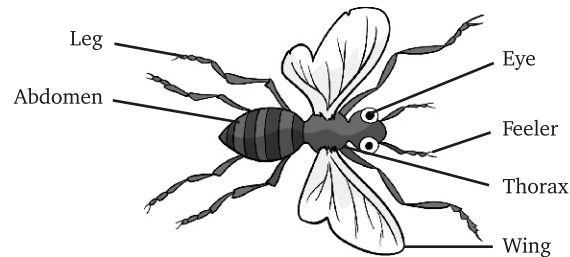
**Ans.** 1. pollen, 2. mosquito, 3. cockroach, ant, housefly, 4. bees, butterflies, ants; 5. head, thorax, abdomen.

**IV. Answer the following questions :**

**Ans.** 1. Social insects like honeybees, wasps and ants live in groups in their colonies. 2. Moulting is the process in which insects change their skin (cuticle) periodically. 3. The process of changing of larva into an adult insect is called metamorphosis. 4. Bees carry pollen stuck to their bodies from one flower to another flower. The female flower gets male pollen in this process and changes into a fruit. 5. Some insects are harmful to man as locust and grasshopper destroy crops by eating them while cockroaches and housefly carry dirt and germs.

### Activity Time

**V. Label the body parts of an insect :**



## Fun Time

VI. Do it yourself.

## 8. Water and Weather

### Exercise

**I. Tick (✓) the correct answer : (Multiple Choice Questions)**

**Ans.** 1. (c) nature, 2. (c) soluble, 3. (c) Rain.

**II. Fill in the blanks using the words given below :**

**Ans.** 1. solid, 2. soluble, 3. condensation, 4. climate, 5. sloping.

**III. Name :**

**Ans.** 1. Liquid, Solid, Gas; 2. Winter, Summer, Monsoon; 3. Sun, Wind, Cloud, Rain.

**IV. State whether the following sentences are 'True' or 'False' :**

**Ans.** 1. True, 2. True, 3. True, 4. False, 5. True.

**V. Answer the following questions :**

**Ans.** 1. The three forms of water are solid (ice), liquid (water) and gas (water vapour).

2. Days are warmer because of the heat of the sun.

3. The water from the oceans, rivers and ponds evaporates and changes into water vapour which goes up and condenses on dust particles in cold air. These tiny droplets of water collect together to form clouds.

4. Water from rivers, lakes and oceans is evaporated by the sun's heat. This water vapour goes high into the air where it changes into tiny droplets of water which come together to form clouds. This leads to rainfall and the water comes back to the earth. This process is called water-cycle.

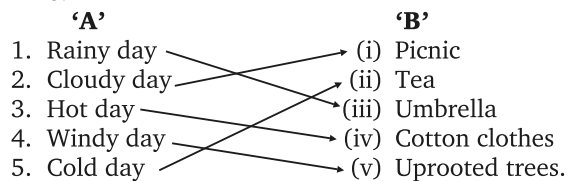
5. An advance information given about weather is called weather forecast.

6. In cold countries, water vapour condenses into snowflakes or tiny crystals of ice due to very cold climate, so there is snowfall instead of rainfall.

**Activity Time**

**VI. Match the columns :**

**Ans.**



**VII.** Do it yourself.

**VIII.** Do it yourself.

**9. The Earth and Its Satellites**

**Exercise**

**I. Tick (✓) the correct answer : (Multiple Choice Questions)**

**Ans.** 1. (b) eight, 2. (b) atmosphere, 3. (a) rotation, 4. (c) astronauts, 5. (a) sun.

**II. Fill in the blanks using the words given below :**

**Ans.** 1. one year, 2. 24 hours, 3. axis, 4. satellite, 5. light.

**III. Name the following :**

**Ans.** 1. Rotation, 2. Revolution, 3. Crust, 4. Spaceship, 5. Neil Armstrong.

**IV. Fill in 'East' or 'West' :**

**Ans.** 1. west, east; 2. east, 3. east, 4. west, 5. west.

**V. Match the columns :**

A	B
1. Earth	(i) Very hot
2. Revolution	(ii) Path along which the earth goes around the sun
3. Rotation	(iii) Round
4. Orbit	(iv) $365\frac{1}{4}$ days
5. Core	(v) Day and night

**VI. State whether the following sentences are 'True' or 'False' :**

**Ans.** 1. True, 2. False, 3. False, 4. True, 5. True.

**VII. Answer the following questions :**

- Ans.** 1. The rotation of the earth on its axis causes day and night.  
2. We see moon in different phases because of the changes in the position of the earth.  
3. The moon takes about 28 days to rotate once on its axis.  
4. It is not easy to go to space due to earth's gravity. It is also very expensive and only national governments can afford it.  
5. Man-made satellites are so designed that they can go into space and revolve around the earth. They provide us advance information about weather and send television pictures from one part of the world to another.

**Activity Time**

**VIII. Find the odd one out. Give reasons for your answer :**

- Ans.** 1. Star : It is star but others are phases of moon.  
2.  $365\frac{1}{4}$  days : It is the time period of revolution of earth but others are related to rotation.  
3. Rotation : It is the process of rotation but others are related to revolution.

**IX.** Do it yourself.

**X.** Do it yourself.

**XI.** Do it yourself.

**XII.** Do it yourself.

### Fun Time

XIII. Do it yourself.

XIV. Do it yourself.

XV. Do it yourself.

### Let us Visit

XVI. Do it yourself.

XVII. Do it yourself.

## 10. Three States of Matter

### Exercise

#### I. Tick (✓) the correct answer : (Multiple Choice Questions)

Ans. 1. (a) solid, 2. (b) Oxygen, 3. (c) water vapour.

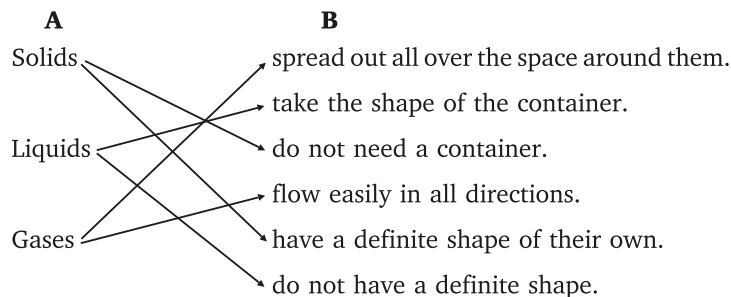
#### II. Fill in the blanks using the words given below :

Ans. 1. shape, 2. shape, 3. gas, 4. solid, 5. Ice.

#### III. Name three :

Ans. 1. Solid, Liquid, Gas; 2. Iron, Glass, Wood; 3. Water, Milk, Petrol; 4. Oxygen, Hydrogen, Carbon dioxide.

#### IV. Match the columns :



#### V. Answer the following questions :

Ans. 1. Anything that occupies space and has weight is called 'matter'.

2. A solid has a definite shape and size whereas liquid have no shape and size and takes the shape of the container that it is filled in.

3. When we light a candle, the wax turns into liquid because of the heat. The wick takes in liquid wax which changes into gas and the candle keeps on burning.

4. Liquids flows from upper to lower level. It no shape of its own whereas gas flows in all directions and it takes up all the space in the container.



## Activity Time

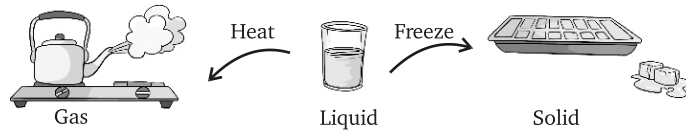
**VI. Here is a list of things you eat or drink at home. Sort them out into solids or liquids :**

Bread	<b>S</b>	Butter	<b>S</b>	Milk	<b>L</b>
Coffee powder	<b>S</b>	Oil	<b>L</b>	Sugar	<b>S</b>
Ice	<b>S</b>	Fruit-juice	<b>L</b>	Salt	<b>S</b>

**VII. Who am I?**

A gas.

**VIII. Draw the arrow heads at the correct places and label the figures :**



## Fun Time

**IX.** Do it yourself.

## Let us Visit

**X.** Do it yourself.

# 11. Soil

## Exercise

**I. Tick (✓) the correct answer : (Multiple Choice Questions)**

**Ans.** 1. (c) soil, 2. (a) rocks, 3. (a) Earthworm.

**II. Fill in the blanks using the words given below :**

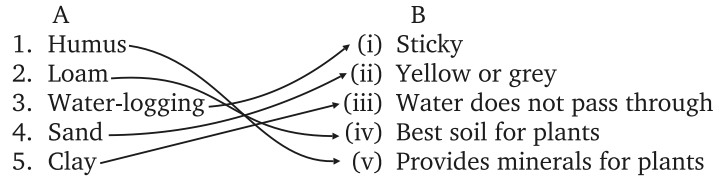
**Ans.** 1. support, water, minerals 2. Clayey, 3. parts of plants and animals, 4. Top soil.

**III. State whether the following sentences are 'True' or 'False' :**

**Ans.** 1. False, 2. False, 3. False, 4. True, 5. False.

**IV. Match the columns :**

**Ans.**



**V. Name six things that soil contains :**

**Ans.** Gravel, Fine sand, Clay, Humus, Moisture, Air.

**VI. Answer the following questions :**

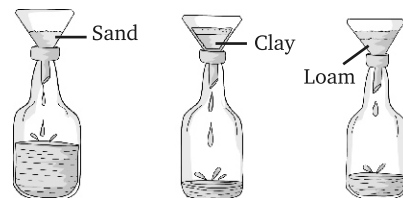
- Ans.** 1. Loamy soil is best for growing plants because it can hold enough air and water. It also has a lot of humus which has enough minerals.
2. Soil is formed by the breaking up of rocks into smaller pieces. The action of the sun, water and wind breaks the rocks. Running water and wind push and roll the rock pieces which rub against each other till they become tiny particles of soil.
3. Humus is the dead and decayed remains of plants and animals.
4. A fertilizer is any material of natural or artificial origin that is mixed with poor soil to provide plants the minerals they need.
5. Earthworms are called 'farmer's friend' because they turn the soil loose and let more air into it. Also, the bodies of dead earthworms decay to form humus and make the soil fertile.

**Activity Time**

**VII. Circle the odd one. Give reasons for your answer :**

- Ans.** 1. Coconut : It is a tree while others are seasonal plants.
2. Rock : It is a material while but others are kinds of soil.
3. Crow : It is a bird while others are small creatures.

**VIII. Take three funnels. Fill each of them with same amount of sand, clay and loam. Put them in three bottles. Pour the same amount of water in each funnel. After some time, it looks like the picture.**



**Now answer these questions :**

1. Sand, 2. Clay, 3. Loam, 4. Clay, 5. Sand, 6. Loam.

**IX. Do it yourself.**

**Fun Time**

- X. Do it yourself.**

**Let us Visit**

- XI. Do it yourself.**

## 12. Our Body Wonderful Machine

### Exercise

**I. Tick (✓) the correct answer : (Multiple Choice Questions)**

**Ans.** 1. (b) tissue, 2. (b) heart, 3. (c) Both of these, 4. (c) carbon dioxide.

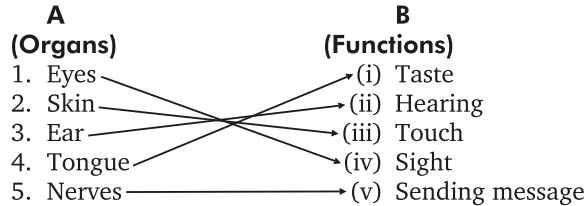
**II. Fill in the blanks using the words given below :**

**Ans.** 1. modern, 2. brain, 3. skull, 4. movement, 5. Veins.

**III. State whether the following sentences are 'True' or 'False' :**

**Ans.** 1. False, 2. False, 3. True, 4. True, 5. True.

**IV. Match the columns :**



**V. Answer the following questions :**

- Ans.** 1. The main function of the breathing system is to breathe and supply oxygen to the body.
2. The skeletal system gives shape, form and support to our body.
3. Kidneys filter and excrete the waste in the form of urine from the blood.
4. We should breathe through the nose because the hair in nose prevent dust and germs from entering.
5. Bones and muscles work together to enable us to walk, run, sit or stand.

### Activity Time

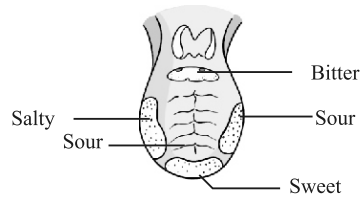
**VI. Who am I?**

**Ans.** 1. Foodpipe, 2. Windpipe, 3. Kidney, 4. Lungs, 5. Arteries.

**VII. Circle the odd one. Give reasons for your answer :**

- Ans.** 1. Heart : It pumps pure blood in our body while others excrete waste products through our body in different forms.
2. Kidney : It is the organ of excretory system while the others are organs of the nervous system.
3. Lungs : They are the organs of breathing system while the others are organs of the digestive system.

**VIII. Label the different taste areas on the tongue :**

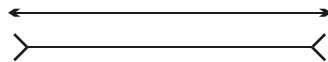


**IX.** Do it yourself.

**Fun Time**

**X.** Do it yourself.

**XI. How much correct can your eyes see? Tell which line is longer? Tell before measuring. Write after measuring.**



Both lines are the same length.

## 13. Clean Environment

### Exercise

**I. Tick (✓) the correct answer : (Multiple Choice Questions)**

**Ans.** 1. (b) It is a breeding place for mosquitoes, 2. (b) putting it in a compost pit, 3. (b) standing water, 4. (a) healthy.

**II. Fill in the blanks using the words given below :**

**Ans.** 1. Garbage, 2. Waste, 3. compost pit, 4. malaria, 5. covered.

**III. State whether the following sentences are 'True' or 'False' :**

**Ans.** 1. True, 2. True, 3. False, 4. False, 5. True.

**IV. Answer the following questions :**

**Ans.** 1. We should dispose off garbage in dustbins.  
2. Diarrhoea, cholera and typhoid are the diseases caused by flies.  
3. Another name of flush latrine is water sealed pit latrine.  
4. We should dispose off waste water because it is perfect breeding place for mosquitoes.

### Activity Time

**V.** Do it yourself.

**VI.** Do it yourself.

**VII.** Do it yourself.

**VIII.** Do it yourself.

**Fun Time**

**IX.** Do it yourself.

## 14. Accidents and Precautions

### Exercise

**I. Tick (✓) the correct answer : (Multiple Choice Questions)**

**Ans.** 1. (c) Both of these, 2. (a) left side, 3. (a) quiet, 4. (a) plastic container.

**II. Fill in the blanks using the words given below :**

**Ans.** 1. careless, 2. water, oil; 3. hands, 4. safety.

**III. Name one safety rule you should follow at given places :**

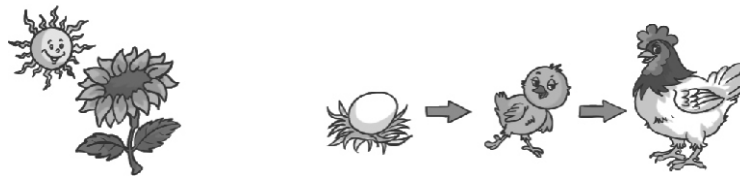
**Ans.** 1. Never play with electric appliances.  
2. Do not play near thorny hedges or barbed wires.  
3. Do not climb over the desks, benches or other students.  
4. Cross the road only at zebra crossing.

**IV. Answer the following questions :**

**Ans.** 1. Accidents occur when people are careless or in an undue haste.  
2. Some dangerous things found in a house are blade, knife, scissors, electrical appliances and match box, etc.  
3. If a person is bleeding, tie a clean hanky or bandage tightly over the bleeding part and make the person sit or lie keeping the bleeding part high.  
4. The first help given to an injured person before the doctor arrives, is called first-aid.

### Activity Time

**V. Tick (✓) the activity we must do and cross (X) which we must not do :**



**Ans.** (X), (✓), (X).

**VI. Do it yourself.**

**Let us Visit**

**VII. Do it yourself.**

## 15. Need of House

### Exercise

**I. Tick (✓) the correct answer : (Multiple Choice Questions)**

**Ans.** 1. (c) Both of these, 2. (b) kitchen, 3. (a) Vacuum cleaner, 4. (a) comfortable.

**II. Fill in the blanks using the words given below :**

**Ans.** 1. comfortable; 2. dustbin; 3. thick, high; 4. everyday.

**III. Match the columns :**

A		B
1. Courtyard	→	(i) Carries dirty water away.
2. Sloping floors	→	(ii) Let air and sunlight in
3. Ventilators and windows	→	(iii) Place to play in
4. Drainage system	→	(iv) Water flows out easily

**IV. Answer the following questions :**

- Ans.** 1. We need a house to live in. It keeps us safe from bad weather, anti-social elements and wild animals.
2. There are three different types of houses in our neighbourhood-huts, flats and bungalows.
3. There are many advantages of open space in the house. Verandah, courtyard and lawn are used to sit out and play. We enjoy fresh and cool air in summer and warmth of the sun in winter.
4. We should keep the house clean and :
- (i) keep everything at its proper place
  - (ii) sweep and mop our house everyday.
  - (iii) throw garbage into dustbin.
  - (iv) toilets must be cleaned.

### Activity Time

**V. Circle the odd one. Give reasons for your answer :**

- Ans.** 1. Bathing : It is related to self cleaning but other works are related to house cleaning.
2. Cooker : It is related to kitchen but others things are related to house cleaning.
3. Cooking gas : It is related to kitchen while others are related to drawing room.
4. Cat : It is the big animal while others are small creatures.

**VI. Do it yourself.**

### Fun Time

**VII. Do it yourself.**

## 16. Force and Work

### Exercise

**I. Tick (✓) the correct answer : (Multiple Choice Questions)**

**Ans.** 1. (b) force, 2. (c) Both of these, 3. (a) faster.

**II. State whether the following sentences are 'True' or 'False' :**

**Ans.** 1. False, 2. True, 3. False, 4. True, 5. True.

**III. Answer the following questions :**

**Ans.** 1. A push or pull is called force.

2. The force helps us in performing work.

3. When a force moves an object to some distance, it is said 'work is done'.

4. The things move from one place to another by pushing or pulling them.

**IV. Write six different types of movements a force can cause :**

**Ans.** 1. lift, 2. heave, 3. squeeze, 4. twist, 5. bend, 6. break.

### Activity Time

**V. Match the words with the movement.**



Pull



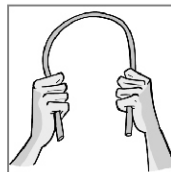
Squeeze



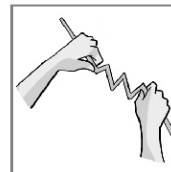
Turn



Lift



Bend



Twist

## 17. Measurements

### Exercise

**I. Tick (✓) the correct answer : (Multiple Choice Questions)**

**Ans.** 1. (a) scientific knowledge, 2. (b) minutes, 3. (a) metre, 4. (b) 37°C.

**II. Fill in the blanks using the words given below :**

**Ans.** 1. length, 2. kilograms, 3. litres, 4. Thermometer, 5. kilometres.

**III. Answer the following questions :**

**Ans.** 1. Basic standard unit of measurement means the standard units for measuring mass (weight), length, capacity (volume), temperature and time.

2. The instruments use to measure the following are :

- (a) ruler, scale, metre rod, measuring tape.
- (b) balance weighing machine.
- (c) measuring vessels, jars.
- (d) watch, clock.
- (e) thermometer.

3. The standard unit of the following are as follows :

- (a) metre (b) kilogram (c) litre (d) second (e) degree

**IV. Which unit would you use to measure the following?**

**Choose from—kg, g, km, m, cm, l and ml.**

1. kg, 2. cm, 3. ml, 4. m, 5. km.

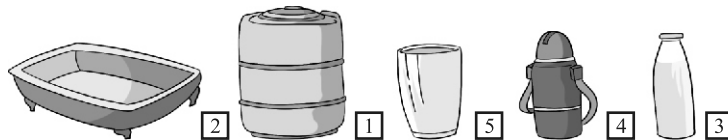
**V.** Do it yourself.

**VI. Solve the following problems :**

1. 3; 2. 550; 3. 20; 4. 3: 20.

**Fun Time**

**VII. Number the following objects in decreasing order of their capacity :**



**Half-Yearly Test Paper  
(Based on Chapters 1 to 9)**

**Note :** All question are compulsory.

**I. Tick (✓) the correct answer : (Multiple Choice Questions)**

1. (b) Plant, 2. (b) Stem (underground), 3. (b) vulture, 4. (b) wood.

**II. Fill in the blanks :**

1. cat, 2. food, 3. colonies, 4. condensation.

**III. State whether the following sentences are 'True' or 'False' :**

1. False, 2. True, 3. True, 4. True.

**IV. Name three :**

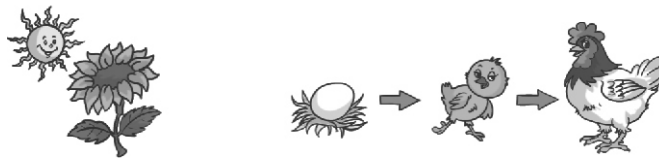
- 1. Tiger, Lion, Dog
- 2. Solid, Liquid, Gas
- 3. Ants, Beetles, Butterflies



**V. Answer the following questions :**

- Ans.** 1. Green Plants make their food in their leaves from carbon dioxide and water in the presence of sunlight.  
2. Animal need food to grow and stay healthy.  
3. Most birds feed their young one and look after them. They teach them to fly and find food themselves.  
4. The rotation of the earth on its axis causes day and night.

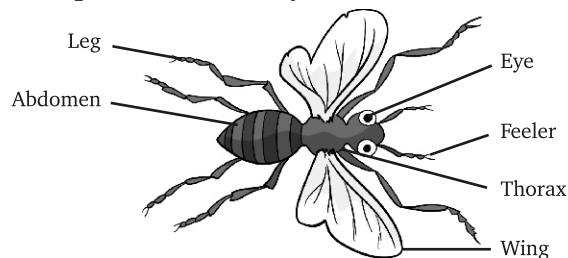
**VI. Write in the blanks what you have learnt from each of the following pictures :**



Living things move

A chick grows into a hen

**VII. Label the parts of the body of the insect.**



**Annual Test Paper  
(Based on Chapters 10 to 17)**

**Note :** All question are compulsory.

**I. Tick (✓) the correct answer : (Multiple Choice Questions)**

**Ans.** 1. (c) leaves, 2. (b) cannot fly, 3. (b) Oxygen, 4. (c) Both of these, 5. (b) force.

**II. Fill in the blanks :**

**Ans.** 1. dustbin, 2. parts of plants and animals, 3. skull, 4. malaria, 5. hand.

**III. State whether the following sentences are 'True' or 'False' :**

**Ans.** 1. False, 2. False, 3. False, 4. False, 5. True.

**IV. Match the column 'A' with the column 'B' :**

**Ans.**

- | <b>A</b>                   |         | <b>B</b>                  |
|----------------------------|---------|---------------------------|
| 1. Courtyard               | → (i)   | carries dirty water away. |
| 2. Sloping floors          | → (ii)  | Let air and sunlight in.  |
| 3. Ventilators and windows | → (iii) | Place to play in.         |
| 4. Drainage system         | → (iv)  | Water flows out easily.   |

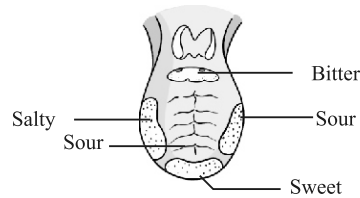
**V. Answer the following questions :**

**Ans.** 1. Any thing that occupies space and has a weight is called 'matter'.

- Humus is the dead decayed remains of plants and animals.
- Skeletal system gives shape, form and support to our body.
- Water-sealed pit latrine is the another name of flush latrine.
- A push or pull is called force.

**VI. Label the different taste areas on the tongue :**

**Ans.**



**VII. Number the following objects in decreasing order of their capacity.**

